

Four way cassette fan coil

Description

Vernal developed attractive and elegant four way cassette fan coil to provide an increasing demand for a modern air conditioning solution for various small and medium size commercial and residential applications such as offices, house rooms, shops, restaurants, hotels, meeting room, data centers, laboratories, studios, showrooms, banks, etc. Vernal cassette fan coil has been designed to install in suspended ceilings without requiring any extra part for operation. The unit has four way outlet for excellent out flowing air and make the ideal air conditioning.



Features:

Vernal four way cassette fan coil consists of 9 models with a wide range of capacities:

Air Flow Range: 340 - 2380 m³/hr

Cooling Capacity: 2.0 - 12.6 kW

Heating Capacity: 2.8 - 19.5 kW



AC/EC Motors

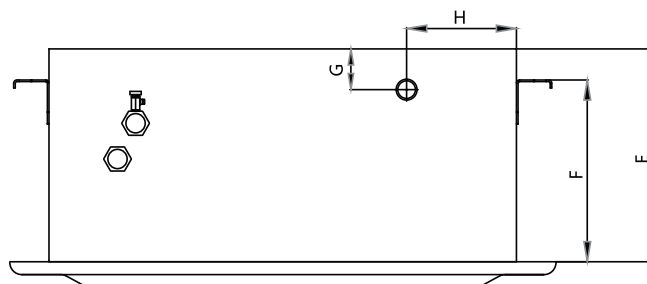
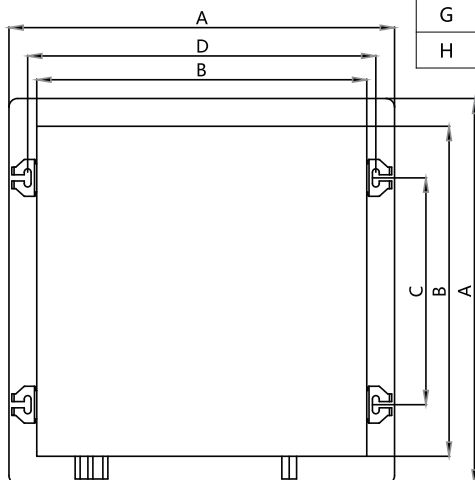

Product Description

2 pipe/4 way cassette FCU, ceiling mounted and suitable for chilled/hot water AC system

Air Flow	340-2380m ³ /h(200-1400CFM)
Cooling Capacity	2.0-12.6KW
Panel Dimension	680*680 830*830 980*980

Dimensions

Dim.	CF4-020,030,040CA	CF4-050,060,080CA	CF4-100,120,140CA
A	680	830	980
B	582	712	827
C	400	544	655
D	614	744	859
E	265	290	290
F	255	220	220
G	51	89	88
H	137	142	146



Standard Specification

Aesthetic ABS panel	
Air Filter	Synthetic removable and washable
Housing	Galvanized steel with high density foam insulation inside
Heat Exchanger	Copper tube and hydrophilic AL fins with air release valve
Drain Pan	High density polystyrene foam material
Drain Pump	70cm head or 120cm head, with float switch and no return valve
Fan/Motor	Centrifugal fan, 3 speed motor or EC motor *
Control System	Main board, transformer, built-in electric control or external electric control *

*: Optional

Technical Parameters

Model			CF4-020CA	CF4-030CA	CF4-040CA	CF4-050CA	CF4-060CA	CF4-080CA	CF4-100CA	CF4-120CA	CF4-140CA	
Cooling	Cooling Capacity	H	2.0	2.7	3.7	4.7	5.8	7.2	9.2	11	12.6	
		M	1.7	2.3	2.8	3.8	4.6	5.8	8.0	9	10.5	
		L	1.1	1.4	2.0	2.7	3.9	4.3	6.5	7	9.0	
	Water Flow Rate	L/h	345	470	640	808	995	1240	1580	1890	2160	
	Water Pressure Drop	kPa	15	27	15	12	16	21	37	40	47	
Heating	Hng Capacity	H	2.8	4.2	5.6	7.0	8.4	11.2	13.9	16.7	19.5	
		M	2.5	3.5	4.2	5.7	6.9	8.7	12.0	13.5	15.7	
		L	1.7	2.1	3.0	4.0	5.8	6.4	9.7	10.5	13.5	
Blower	Type		Centrifugal Fan									
	Dia.	mm	Φ315	Φ315	Φ315	Φ380	Φ380	Φ380	Φ476	Φ476	Φ476	
	Qty.		1	1	1		1	1	1	1	1	
Electric Parameter	Power Supply	V/Ph/Hz	220/ 1 / 50									
	Input Power	W	39	52	62	76	96	132	152	189	220	
	Current	A	0.18	0.24	0.27	0.35	0.45	0.58	0.78	0.80	1.07	
Fan	m ³ /h	H	340	510	680	850	1020	1360	1700	2040	2380	
		M	280	390	520	680	790	1030	1400	1500	1850	
		L	180	260	350	490	520	590	950	1030	1500	
Sound Pressure	dB(A)	37	39	41	43	45	46	47	50	52		
Control Mode		Remote control or wired wall pad										
Unit Dim.(LxWxH)	mm	582x582x265				712x712x290			827x827x290			
Panel Dim.(LxWxH)	mm	680x680x30				830x830x30			980x980x30			
Net Weight	kg	20				26			36			
Water Connection	In	inch	ZG3/4"									
	Out	inch	ZG3/4"									
	Drain Pipe (OD)	mm	26									

Test Condition:

Cooling: inlet dry ball temp. 27°C, wet ball temp. 19.5°C, inlet water temp. 7°C, outlet water temp.12°C

Heating: inlet dry ball temp. 21°C, inlet water temp. 60°C, same water flow as cooling