

i-CHD / a-CHD

i-CHD

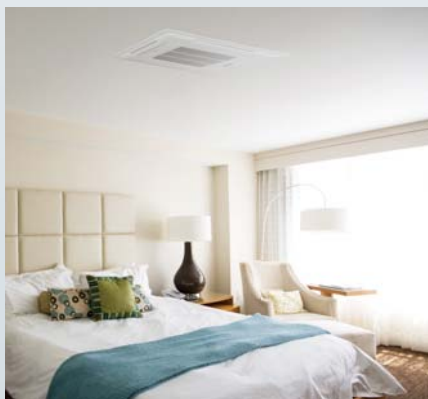
New generation cassette with EC high efficiency motor.
Centrifugal fan with continuous air flow regulation and speed modulation.
Energy consumption reduced by more than 50%.

a-CHD

New cassette with traditional 5 speed motor.



Perfect
Comfort



Reduced
Consumption



Silent
Operation



i-CHD / a-CHD

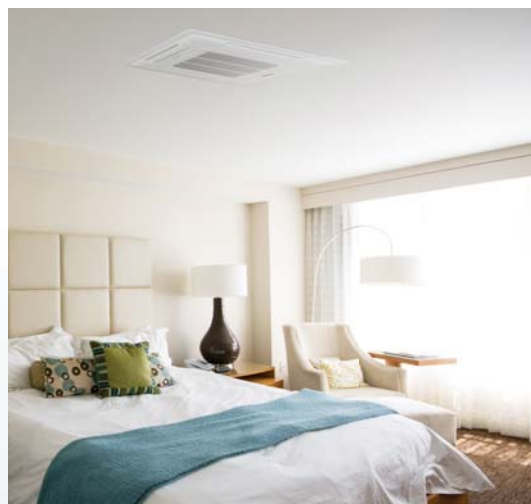
A new way to live comfort

The new i-CHD/a-CHD range has been specifically developed to be adapted to every ambient thanks to its modern and minimal design, which is a result of the full experience and know-how Climaveneta.

Perfect Comfort

The new i-CHD cassette is synonym of real comfort and lowest operating costs. The brushless motor ensures the perfect adaptation to the thermal load in the ambient, and reduces the temperature fluctuations comparing to set point parameters.

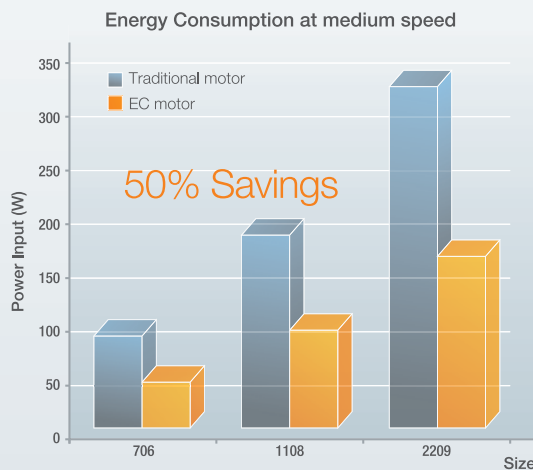
Centrifugal fans operate through a continuous air flow modulation, with no speed steps or relay switching as traditional fan coil units.



Reduced Energy Consumption

The i-CHD unit features an electrical absorption 50% lower than traditional cassette of the same size.

The advantages of this increased efficiency are enhanced over the whole operating year, making available the saved energy for other components of the system, or improving the building energy efficiency ratio.



Complete Integration

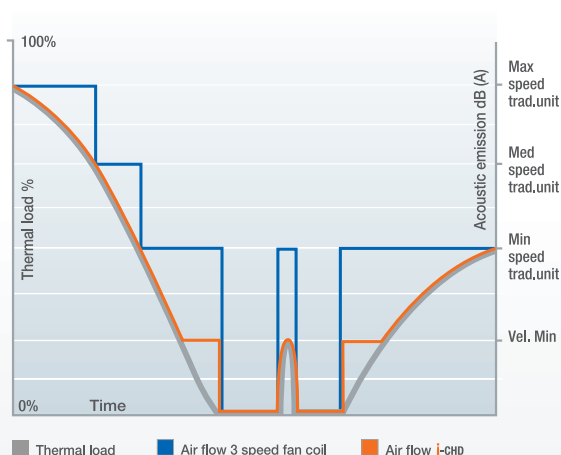
The i-CHD cassette offers a wide versatility and easy installation. User-friendly interface of the controller with the LCD screen allows the full management of all operating conditions.

Furthermore, it is possible to integrate i-CHD units in Master / Slave networks and Building management system (e.g. Idrorelax by Climaveneta). i-CHD interfaces guarantee a quick and simple installation thanks to only two wires connection.



Comfort, efficiency and integration without compromise

Today comfort has a new name: i-CHD. The new generation cassette featured by high efficiency, low noise and integration capability.



Silent Operation

Thanks to the continuous fan speed modulation, the noise produced in order to keep the temperature set-point is extremely low.

The adaptation to new set values or different loads is carried out by the gradual variation of fan speed. The acoustic emissions mingle therefore with the background noise and are almost imperceptible to human ears.

Ease of installation and maintenance

From the moment of the installation, the management and the maintenance is made simple and intuitive. All the main parts can be easily accessed through the front grille:

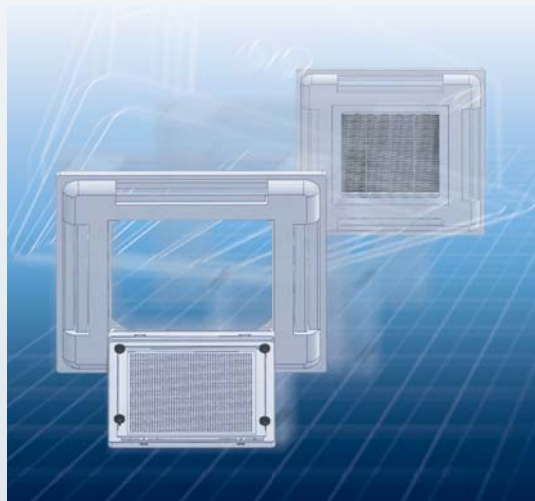
- Easy removable air filters
- Manual air valve with outlet connected to the plastic condensate collecting tray
- Condensate drain pump with 500 mm working head, complete with float
- Set-up for fresh air intake
- Set-up for duct air distribution

Design

i-CHD/a-CHD are advanced solutions for the requirements of modern residential and commercial architecture, even more sensible to design and aesthetics. Featured with a simple and refined design that perfectly fits to any ambient, i-CHD/a-CHD only use high quality materials.

The units are now available in three sizes in order to meet any kind of installation requirement:

- 60x60cm
- 80x80cm
- 90x90cm



i-CHD / a-CHD



A new way to live comfort



Frame

Frame in galvanised steel insulated with self-extinguishing closed-cell polyethylene blanket of suitable thickness, to limit heat loss and noise to a minimum.

Front panel and grille are already assembled on the unit. Airflow grille in ABS. Manual and independent louvers adjustable for vertical airflow direction.



Control Box

Plug In Control Box complete of switchboard with power and control terminal block.

Electrical power and control switchboard, complete with electronic air flow regulator and terminal board for connection to network and available remote controls.



Coils

Coil with corrugated aluminum fins and copper pipes, tested with dried air at 14 bar.

A cutting-edge technology that contributes to a better energy efficiency of the product, improving the exchanging of thermal heat.



EC Motor

AC Motor with 5 speed for traditional units.

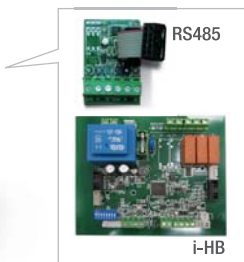
Low consumption EC electric motor that guarantees a precise and continuous control of speed rotation.

The unit results in a reduced power absorption of approximately 50% compared to the traditional ON/OFF motor.



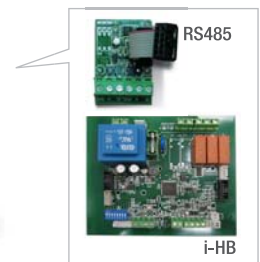
Controllers

i-CHD controllers



EKW wall mounted

Room thermostat, manual- and automatic regulation of fan, manual- and automatic mode, change-over, room- and minimum temperature probes, regulation of electric heater, valves (on/off or modulating), serial connection for mini-network and integration into BMS- or Idrorelax systems. The management and control of all functions is guaranteed by the Power Board Kit-HB. In combination with i-HB is supplied the kit RS485 as interface for centralized management systems.



iK universal

Advanced electronic control with LCD display, room thermostat, manual and automatic regulation of fan, manual- and automatic mode change-over, room and minimum temperature probes, regulation of electric heater, valves (on/off or modulating), serial connection for mini-network and integration into BMS or Idrorelax systems. The management and control of all functions is guaranteed by the Power Board Kit-HB. In combination with i-HB is supplied the kit RS485 as interface for centralized management systems.

Master / Slave Integration

The controllers can be set as:

- **GLOBAL** user interface: the controller acts as the Master and manages operation of all the units. All the fan coils connected to the network will operate in the same mode.
- **PRIVATE** user interface: if one cassette needs to operate in different conditions from the MASTER, the respective controller can work autonomously through a different configuration of the dip switch.



a-CHD / i-CHD controllers *



MTW wall mounted

Room thermostat, fan speed slider, mode slider, room- and minimum temperature probes and regulation of on/off valves.



ATW wall mounted

Room thermostat, manual- and automatic regulation of fan, manual- and automatic mode change-over, room- and minimum temperature probes and command of on/off valves. Malfunction digital contact. Configuration dip switch.

* for 3 speed i-CHD unit only

a-CHD

General technical data

a-CHD U-2T		a-CHD 606	a-CHD 706	a-CHD 1108	a-CHD 2209
Version		U-2T	U-2T	U-2T	U-2T
Air flow rate					
Vel. 5*	m³/h	200	450	700	1380
Vel. 3*	m³/h	290	617	960	1970
Vel. 1*	m³/h	575	810	1300	2250
Total cooling capacity	(1)				
Vel. 5*	kW	1,41	2,70	3,57	7,69
Vel. 3*	kW	2,06	3,76	5,60	10,2
Vel. 1*	kW	3,20	4,56	6,90	11,5
Sensible cooling capacity	(1)				
Vel. 5*	kW	1,11	2,15	2,96	5,52
Vel. 3*	kW	1,62	2,85	4,37	7,37
Vel. 1*	kW	2,50	3,17	5,06	8,21
Water flow (max)	m³/h	0,55	0,78	1,19	2,01
Pressure drop (max)	kPa	10	36,80	31	49
Total heating capacity	(2)				
Vel. 5*	kW	1,60	3,50	4,68	9,43
Vel. 3*	kW	2,40	4,96	6,70	12,60
Vel. 1*	kW	3,65	6,15	8,54	14,10
Sound power level	(4)				
Vel. 5*	dB(A)	35	42	46	58
Vel. 3*	dB(A)	40	52	57	65
Vel. 1*	dB(A)	48	60	65	70
Technical Characteristics					
Max adsorbed power	W	60	85	147	310
Max adsorbed current	A	0,22	0,37	0,64	1,35
Electrical power supply	V-Ph-Hz	220-240/1/50	220-240/1/50	220-240/1/50	220-240/1/50
Cassette dimensions with air grille					
Height	mm	575	575	730	830
Width	mm	575	575	730	830
Depth	mm	250	250	290	290
Packaging (WxDxH)	mm	750x750x325	750x750x325	910x910x375	1040x1040x375
Net Weight	kg	28	30	36	50

a-CHD U-4T		a-CHD 706	a-CHD 1108	a-CHD 2209
Version		U-4T	U-4T	U-4T
Air flow rate				
Vel. 5*	m³/h	450	700	1090
Vel. 3*	m³/h	617	960	1970
Vel. 1*	m³/h	810	1300	2250
Total cooling capacity	(1)			
Vel. 5*	kW	2,42	3,18	5,36
Vel. 3*	kW	2,87	5,21	6,82
Vel. 1*	kW	3,45	5,70	7,92
Sensible cooling capacity	(1)			
Vel. 5*	kW	2,18	2,76	4,94
Vel. 3*	kW	2,55	4,20	5,97
Vel. 1*	kW	2,88	4,46	6,57
Portata d'acqua (Max)	m³/h	0,59	0,98	1,36
Perdita di carico (Max)	kPa	23	40	40
Total heating capacity	(3)			
Vel. 5*	kW	3,27	3,42	7,56
Vel. 3*	kW	3,68	4,63	8,63
Vel. 1*	kW	4,25	5,03	9,65
Sound power level	(4)			
Vel. 5*	dB(A)	42	47	47
Vel. 3*	dB(A)	52	57	65
Vel. 1*	dB(A)	60	65	70
Technical Characteristics				
Max adsorbed power	W	85	147	305
Max adsorbed current	A	0,38	0,65	1,35
Electrical power supply	V-Ph-Hz	220-240/1/50	220-240/1/50	220-240/1/50
Cassette dimensions with air grille				
Height	mm	575	730	830
Width	mm	575	730	830
Depth	mm	250	290	290
Packaging (WxDxH)	mm	750x750x325	910x910x375	1040x1040x375
Net Weight	kg	28	36	50

(1) Operation in cooling mode: room temperature 27°C d.b./19°C w.b., chilled water at inlet 7°C and at outlet 12°C

(2) Operation in heating mode: room temperature 20°C d.b., hot water at inlet 50°C, with identical flow rate that in the cooling mode

(3) Operation in heating mode: room temperature 20°C d.b., hot water at inlet 70°C and at outlet 60°C

(4) Sound power on the basis of measurements made in compliance with Eurovent 8/2

* Speeds factory-wired

i-CHD

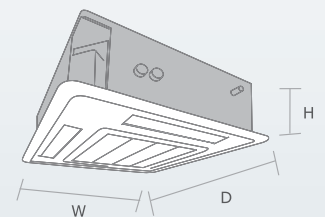
General technical data

i-CHD U-2T		i-CHD 706	i-CHD 1108	i-CHD 2209
Version		U-2T	U-2T	U-2T
Air flow rate				
Vel. 3 (min)	m³/h	200	360	820
Vel. 1 (max)	m³/h	810	1300	2100
Total cooling capacity (1)				
Vel. 1 (max)	kW	4,56	6,90	10,6
Sensible cooling capacity (1)				
Vel. 1 (max)	kW	3,17	5,06	8,11
Water flow (max)	m³/h	0,78	1,18	1,82
Pressure drop (max)	kPa	37	34	36
Total heating capacity (3) (2)				
Vel. 1 (max)	kW	6,15	8,3	12,6
Water flow (max)	m³/h	0,95	1,44	2,28
Pressure drop (max)	kPa	33	26	34
Sound power level (3)				
Vel. 3 (min)	dB(A)	35	39	42
Vel. 1 (max)	dB(A)	60	67	66
Technical Characteristics				
Water content	l	1,56	1,78	2,41
Water inlet fittings	inch	3/4	3/4	3/4
Water outlet fittings	inch	3/4	3/4	3/4
Max adsorbed power	W	40	88	200
Max adsorbed current	A	0,35	0,77	1,74
Electrical power supply	V-Ph-Hz	220-240/1/50	220-240/1/50	220-240/1/50
Cassette dimensions with air grille				
Height	mm	575	730	830
Width	mm	575	730	830
Depth	mm	250	290	290
Packaging (WxDxH)	mm	750x750x325	910x910x375	1040x1040x375
Net Weight	kg	30	36	50
Gross Weight	kg	33	40	55

(1) Operation in cooling mode: room temperature 27°C d.b./19°C w.b., chilled water at inlet 7°C and at outlet 12°C

(2) Operation in heating mode: room temperature 20°C d.b., hot water at inlet 50°C, with identical flow rate that in the cooling mode

(3) Sound power on the basis of measurements made in compliance with Eurovent 8/2



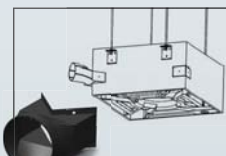
Accessories



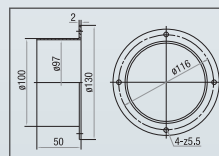
Wall controllers



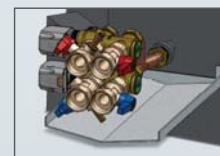
2 way and 3 way valves for main and additional Coil



Branch Duct connection kit



Fresh air Renewal kit



Kit valves 4For2



Expansion Kit RS482
Kit power board i-HB
(for i-CHD units only)

Climaveneta S.p.A.

Via Sarson 57/c
36061 Bassano del Grappa (VI)
Italy
Tel +39 0424 509 500
Fax +39 0424 509 509
info@climaveneta.com
www.climaveneta.com

Climaveneta France

3, Village d'Entreprises
ZA de la Couronne des Prés
Avenue de la Mauldre
78680 Epône
France
Tel +33 (0)1 30 95 19 19
Fax +33 (0)1 30 95 18 18
info@climaveneta.fr
www.climaveneta.fr

Climaveneta Deutschland

Rhenus Platz 2
59439 Holzwickede
Germany
Tel +49 2301 91222-0
Fax +49 2301 91222-99
info@climaveneta.de
www.climaveneta.de

Climaveneta**España - Top Clima**

Londres 67, 1º 4º
08036 Barcelona
Spain
Tel +34 934 195 600
Fax +34 934 195 602
topclima@topclima.com
www.climaveneta.com

Climaveneta Chat Union**Refrig. Equipment Co Ltd**

88 Bai Yun Rd, Pudong Xinghuo
New dev. zone 201419 Shanghai
China
Tel 008 621 575 055 66
Fax 008 621 575 057 97

Climaveneta Polska Sp. z o.o.

Ul. Sienkiewicza 13A,
05-120 Legionowo,
Poland
Tel +48 22 766 34 55-57
Fax +48 22 784 39 09
info@climaveneta.pl
www.climaveneta.pl

Climaveneta**Climate Technologies (P) Ltd**

#3487, 14th Main, HAL 2nd stage,
Indiranagar, Bangalore 560008
India
Tel: +91-80-42466900 - 949,
Fax: +91-80-25203540
sales@climaveneta.in

Climaveneta UK LTD

Highlands Road,
Shirley Solihull
West Midlands B90 4NL
Tel: +44 (0)871 663 0664
Fax: +44 (0)871 663 1664
Freephone: 0800 801 819
response@climaveneta.co.uk
www.climaveneta.co.uk

دامون (با مسئولیت محدود)
نسر ویس

Damon Service Co. L.T.D

نماینده انحصاری کلاهماوتتادر ایران

تلفن: ۲۷۶۶۸ ، ۲۲۰۹۳۲۵۰-۱

